



BODKIN
DESIGN & ENGINEERING

KEY FEATURES

- Dual Panel Thermal Reference With / Without Fever
- Resistive Elements Provides Set-Point Above Ambient
- Fool Proof Fixed Temperature
- Achieves Set-point Temperature in Less than 5 Min.

TR-2 DUAL PANEL THERMAL REFERENCE

SPECIFICATIONS

Two Fixed Temperatures: 98.6 & 100.4 °F

Stability: $\pm 0.01^{\circ}\text{C}$

Accuracy: 0.1 °C

Dimensions: 6.5" x 4.5" x 2", tripod mount

Face dimensions: 3" x 4" each

Weight: 0.6 kg

Environment: 60 °C to -20 °C

Power In: 120 VAC, 15 W Max

THERMAL REFERENCE FOR FEVER DETECTION

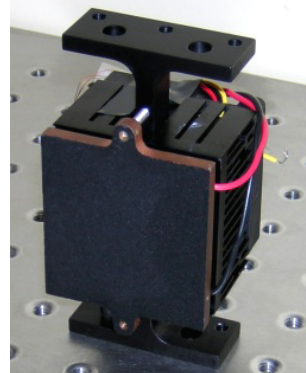
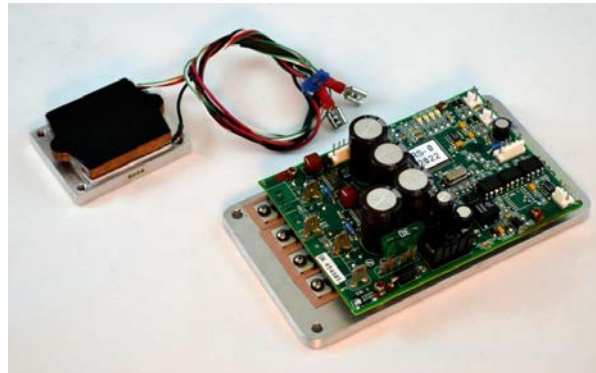
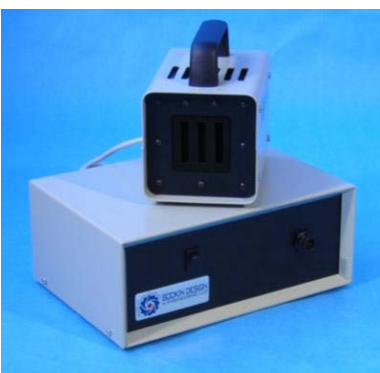
Stabilized blackbody panels provides precise infrared emission for use with midwave and longwave infrared cameras.

Panels are tuned to match the infrared radiant emission of healthy and febrile individuals.

When placed in the view of the camera can quickly and accurately compare temperature, for GO / NOGO results.

Calibration standard for stand-off thermometers, pyrometers and single point detectors.

HOT/COLD BLACKBODY SYSTEMS AND CUSTOMIZED COMPONENTS AVAILABLE



BODKIN DESIGN & ENGINEERING, LLC

TEL 617.795.1968
FAX 617.795.1969

WWW.BODKINDSIGN.COM
SALES@BODKINDSIGN.COM