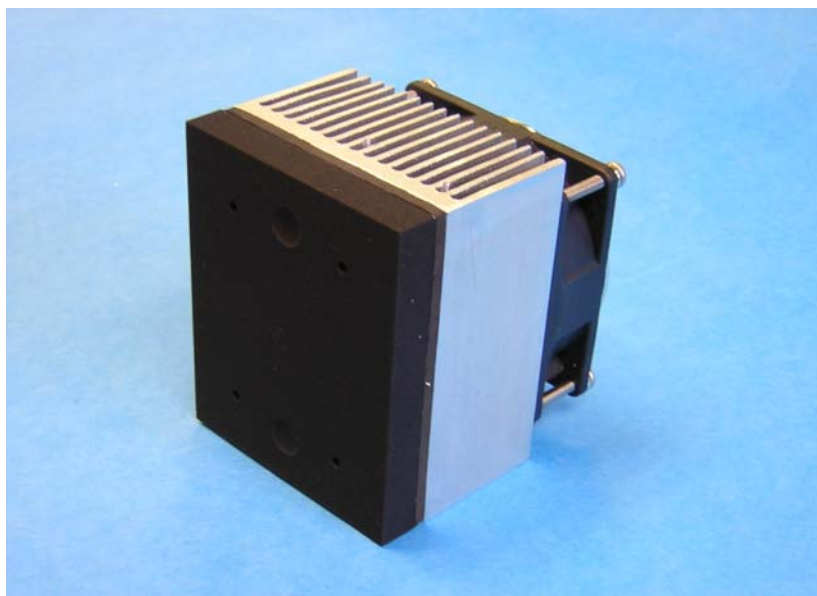




KEY FEATURES

- OEM Incorporation Into Instrument Housing for Built-in Calibration
- Thermo-Electric Drive Provides Both Hot and Cold Set-Point
- Typically Achieves Set-point Temperature in < 1 Min.
- Ideal for Two-point Calibration of Infrared Cameras and Detectors
- Makes Lab Calibration Faster and Easier



HST-4032 RAPID HOT/COLD BLACKBODY

SPECIFICATIONS

Slew rate: +0.26°C/s, -0.08°C/s

Stability: 0.023°C rms ($\pm 0.1^\circ\text{C}$ p-p)

Emissivity: >0.95

Max/Min Temperature: 65°C / 5°C

Dimensions:

Blackbody: 4" x 3.15" x 3.6"

Controller: 10.6" x 7.2" x 4.9"

Face dimensions: 4" x 3.15"

Weight:

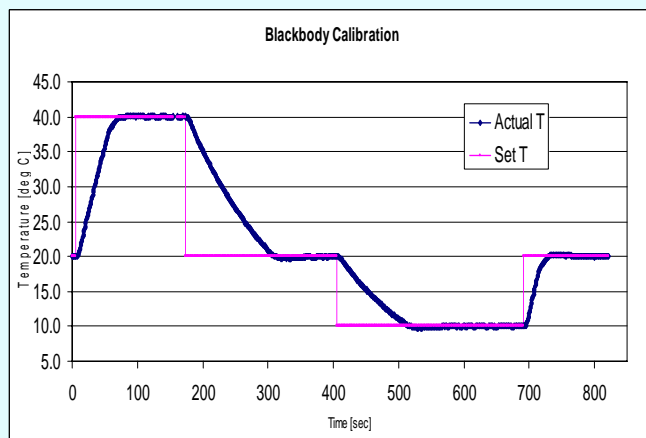
Blackbody: 1.9 lbs.

Controller: 9.25 lbs.

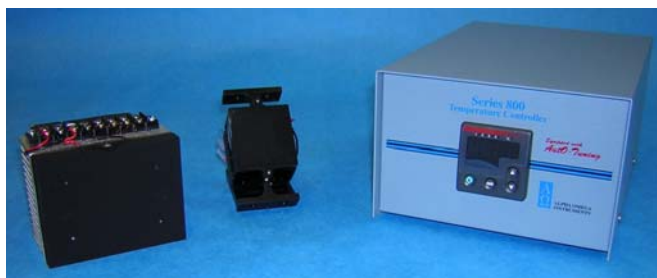
Environment: 60 to -20°C

Power In: 120 VAC, 120 W

HIGH SLEW RATE RAPID SETTLING TIME



BLACKBODY PRODUCTS AND CONTROLLER



MINI BLACKBODY 50h x 50w x 50d mm



CUSTOM-DESIGNED SOLUTIONS TO MEET YOUR CALIBRATION NEEDS

BODKIN DESIGN & ENGINEERING, LLC

TEL 617.795.1968
FAX 617.795.1969

WWW.BODKINDSIGN.COM
SALES@BODKINDSIGN.COM